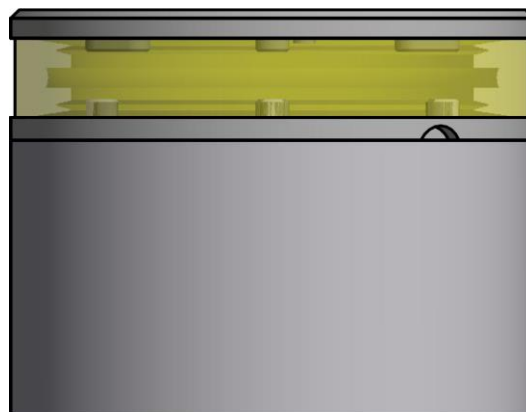


## 200-023 – 2NM 360° YELLOW LIGHT

The LED light consists of a single array of LEDs that produces light in the specified angle.

The precision machined anodized aluminium housing makes the light a rugged and durable housing for the LEDs and electronics contained within, and the polished PMMA lens delivers a clear light with colour ranging that is well within the standard for maritime use.

Lastly all the interior is completely filled with a special potting resin making it water- and vibration proof before each light is subjected to final testing for no less than 16 hours of continuous operation bringing the total test period beyond 24 hours.



### Technical specifications

Ship size: Up to 50m (Up to 164')

Visibility: >2 nautical miles

Intensity: >5,4 cd

Mounting: Horizontal, see the K-Lock system sheet for options.

Operating voltage: 10 - 32 V DC

Number of LEDs: 28

Light colour: **Yellow**

Operating temperature: -25°C to +55°C

Operating hours: 50.000 hours

IP Rating: IP68

Power consumption; 3,2 Watt; Current @ 12 VDC: 0,27A - Current @ 24 VDC: 0,13A

Connection: 1 cable consisting of 2 x 0,5 mm<sup>2</sup> leads, a screen and insulation.

- Red lead = Power
- Black lead = GND

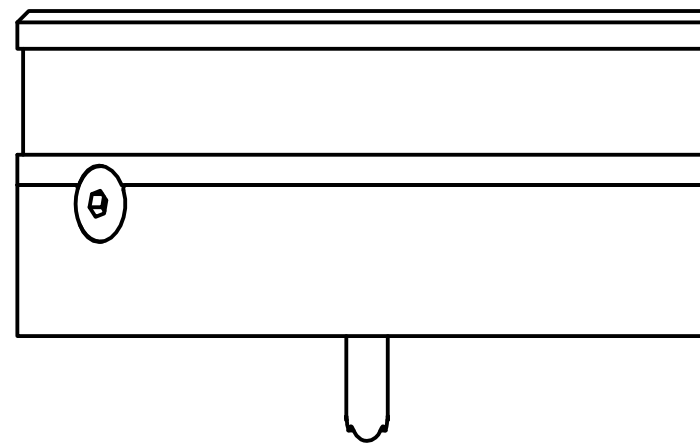
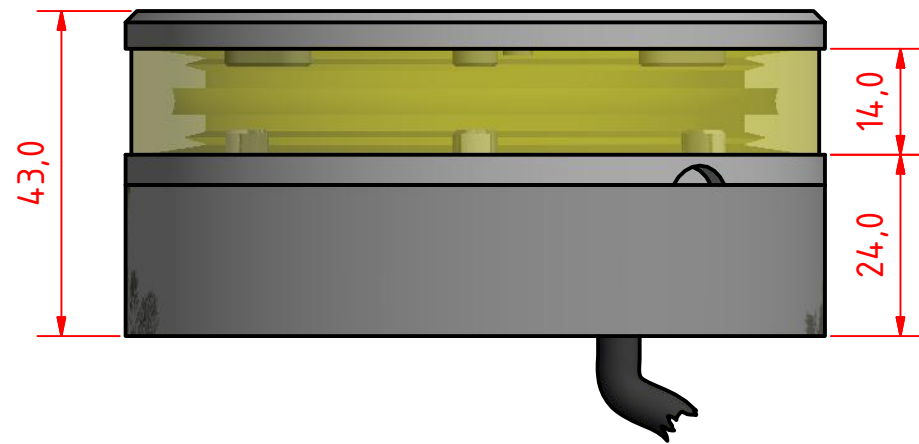
Certification: The product is tested to IEC 60945

Dimensions: See drawing

Weight: 0,31kg

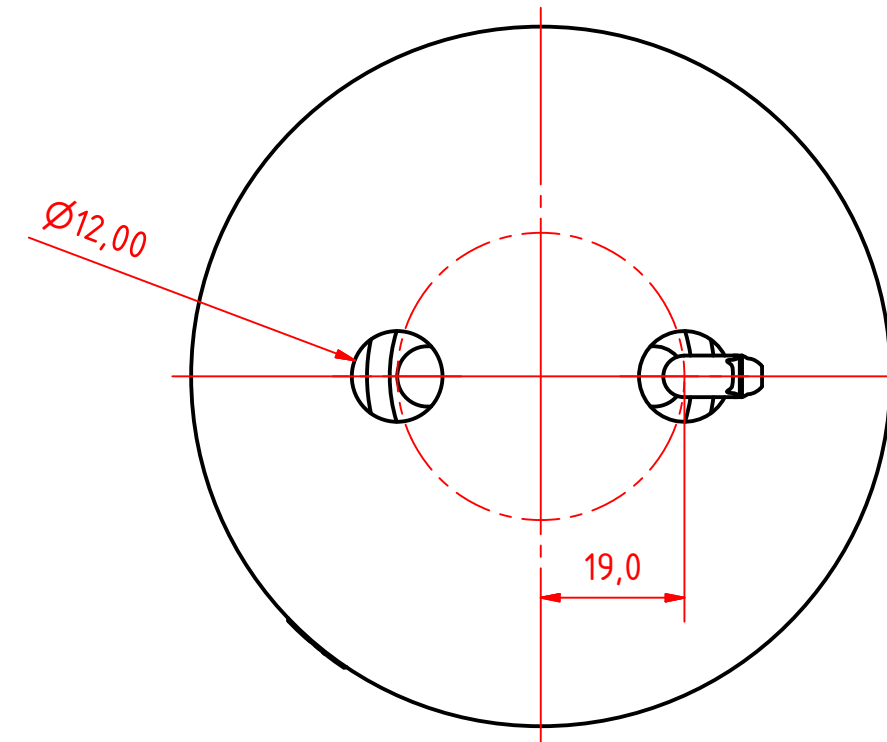
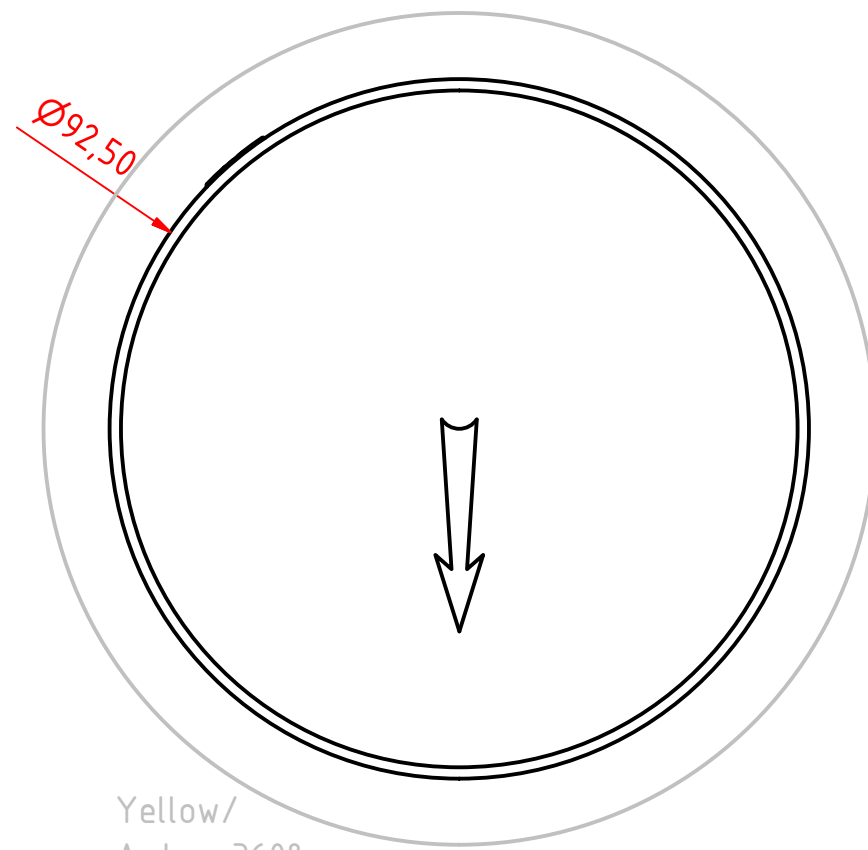
### Included in the package:

- 1 Navigation light, pre-cabled with 0,75m marine grade cable
- 1 Mounting adaptor
- Installation instructions



**Note:**

The PE Plastic base is intended for fitting on site and can be either drilled for mounting screws from above or drilled and tapped from below. 6mm machine screws with nuts and washers are recommended for secure mounting.



**200-023 - 360° Yellow/Amber light, PE Std Base.**

DRAWING NO.: <b>200-023AB</b>	REV. NO.: <b>0</b>	SIZE: <b>A3</b>	DRAWN BY: <b>Sergio</b>
SCALE: <b>1:1</b>	TOLERANCES: <b>DS/ISO 2768-f</b>	REVIEWED BY:	CREATION DATE: <b>09-01-2017</b>
MATERIAL DESCRIPTION: <b>Alu EN 6082, Acrylic, PE</b> (20µ) Silver anodized according to EN ISO 7599 (50µ) Black anodized according to MIL-A 8625F			

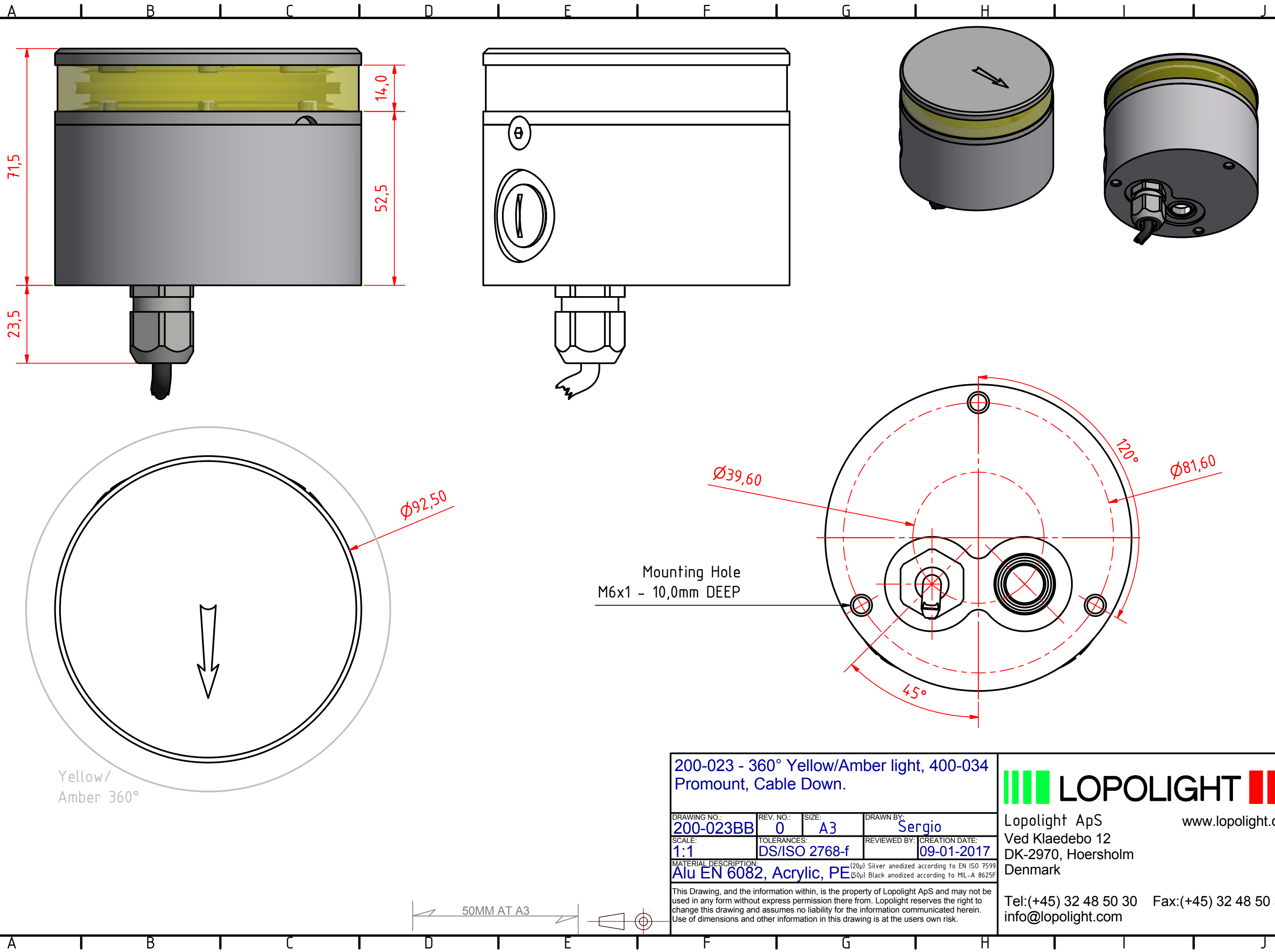
This Drawing, and the information within, is the property of Lopolight ApS and may not be used in any form without express permission there from. Lopolight reserves the right to change this drawing and assumes no liability for the information communicated herein. Use of dimensions and other information in this drawing is at the users own risk.



Lopolight ApS  
Ved Klaedebo 12  
DK-2970, Hoersholm  
Denmark  
www.lopolight.com

Tel: (+45) 32 48 50 30 Fax: (+45) 32 48 50 32  
info@lopolight.com





200-023 - 360° Yellow/Amber light, 400-034  
Promount, Cable Down.

DRAWING NO.:	REV. NO.:	SIZE:	DRAWN BY:
200-023BB	0	A3	Sergio
SCALE:	TOLERANCES:	REVIEWED BY:	CREATION DATE:
1:1	DS/ISO 2768-f		09-01-2017

MATERIAL DESCRIPTION:  
Alu EN 6082, Acrylic, PE (20µ) Silver anodized according to EN ISO 7599  
(50µ) Black anodized according to MIL-A 8625F

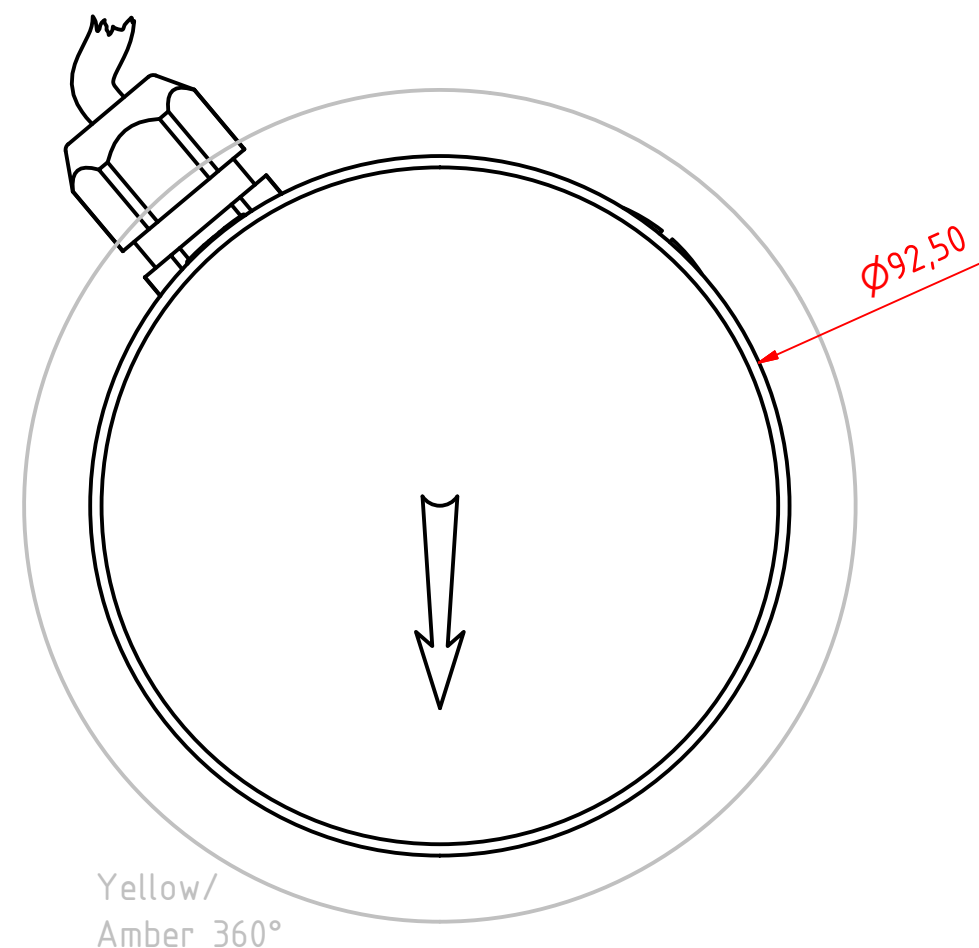
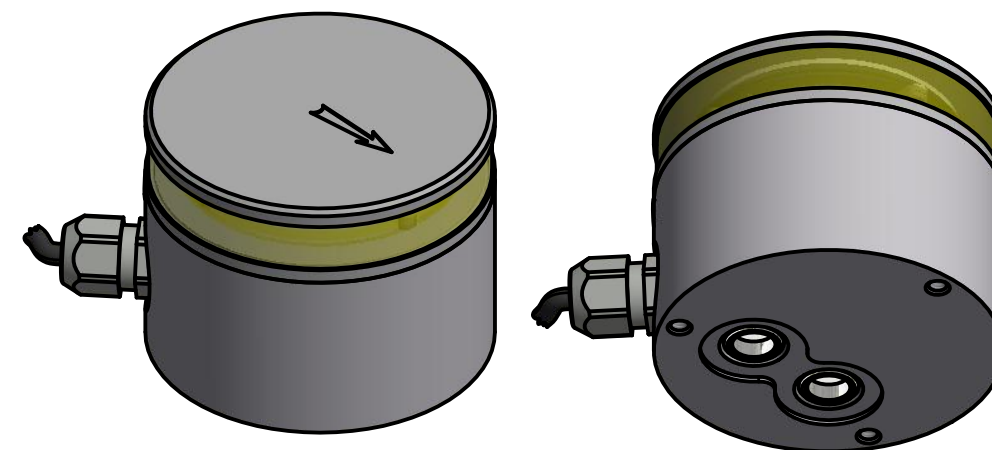
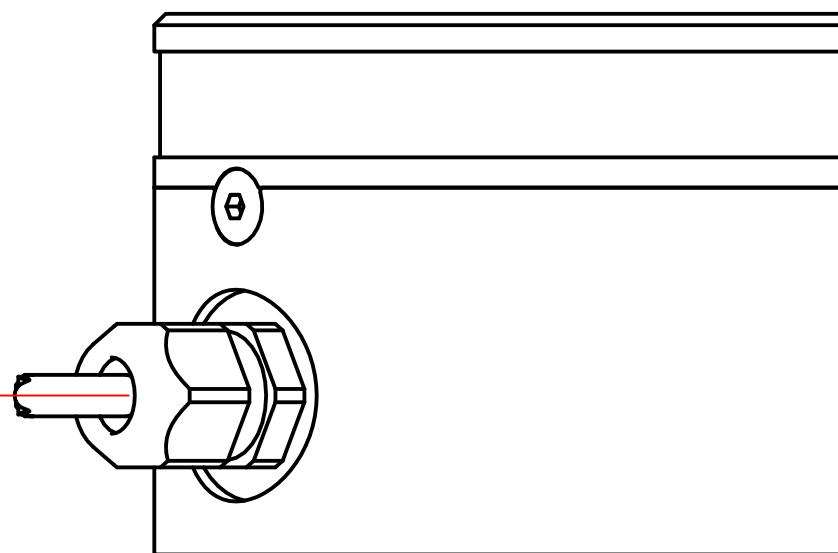
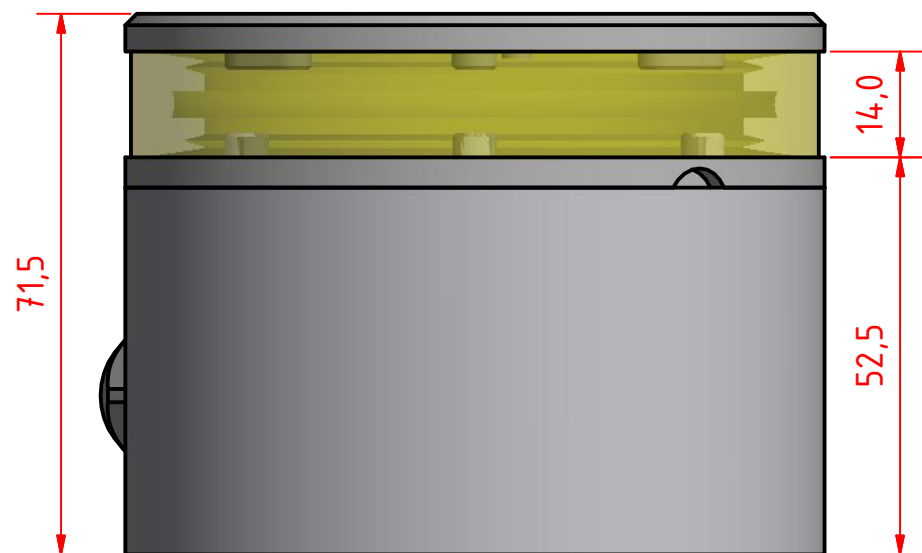
This Drawing, and the information within, is the property of Lopolight ApS and may not be used in any form without express permission there from. Lopolight reserves the right to change this drawing and assumes no liability for the information communicated herein. Use of dimensions and other information in this drawing is at the users own risk.

**LOPOLIGHT**

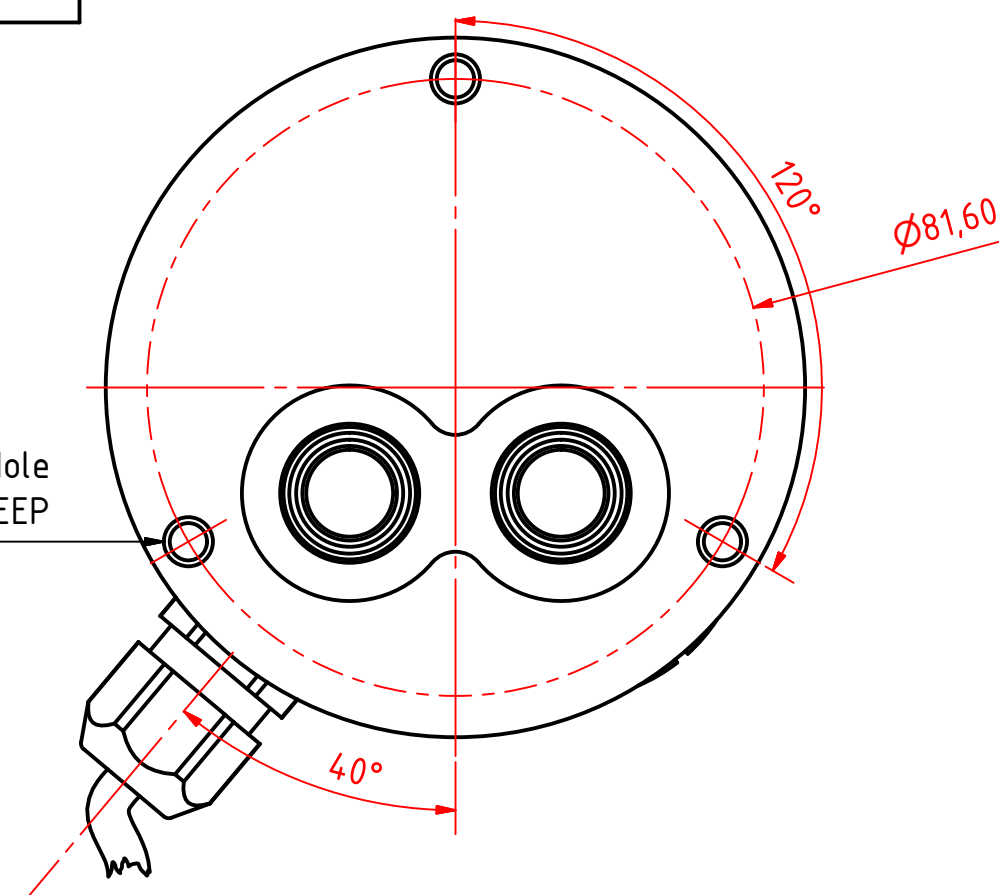
Lopolight ApS  
Ved Klaedebo 12  
DK-2970, Hoersholm  
Denmark

Tel: (+45) 32 48 50 30 Fax: (+45) 32 48 50 32  
info@lopolight.com

50MM AT A3



Mounting Hole  
M6x1 - 10,0mm DEEP



200-023 - 360° Yellow/Amber light, 400-034  
Promount, Cable Aft.

DRAWING NO.: 200-023CB	REV. NO.: 0	SIZE: A3	DRAWN BY: Sergio
SCALE: 1:1	TOLERANCES: DS/ISO 2768-f	REVIEWED BY:	CREATION DATE: 09-01-2017

MATERIAL DESCRIPTION:  
Alu EN 6082, Acrylic, PE (20µ) Silver anodized according to EN ISO 7599  
(50µ) Black anodized according to MIL-A 8625F

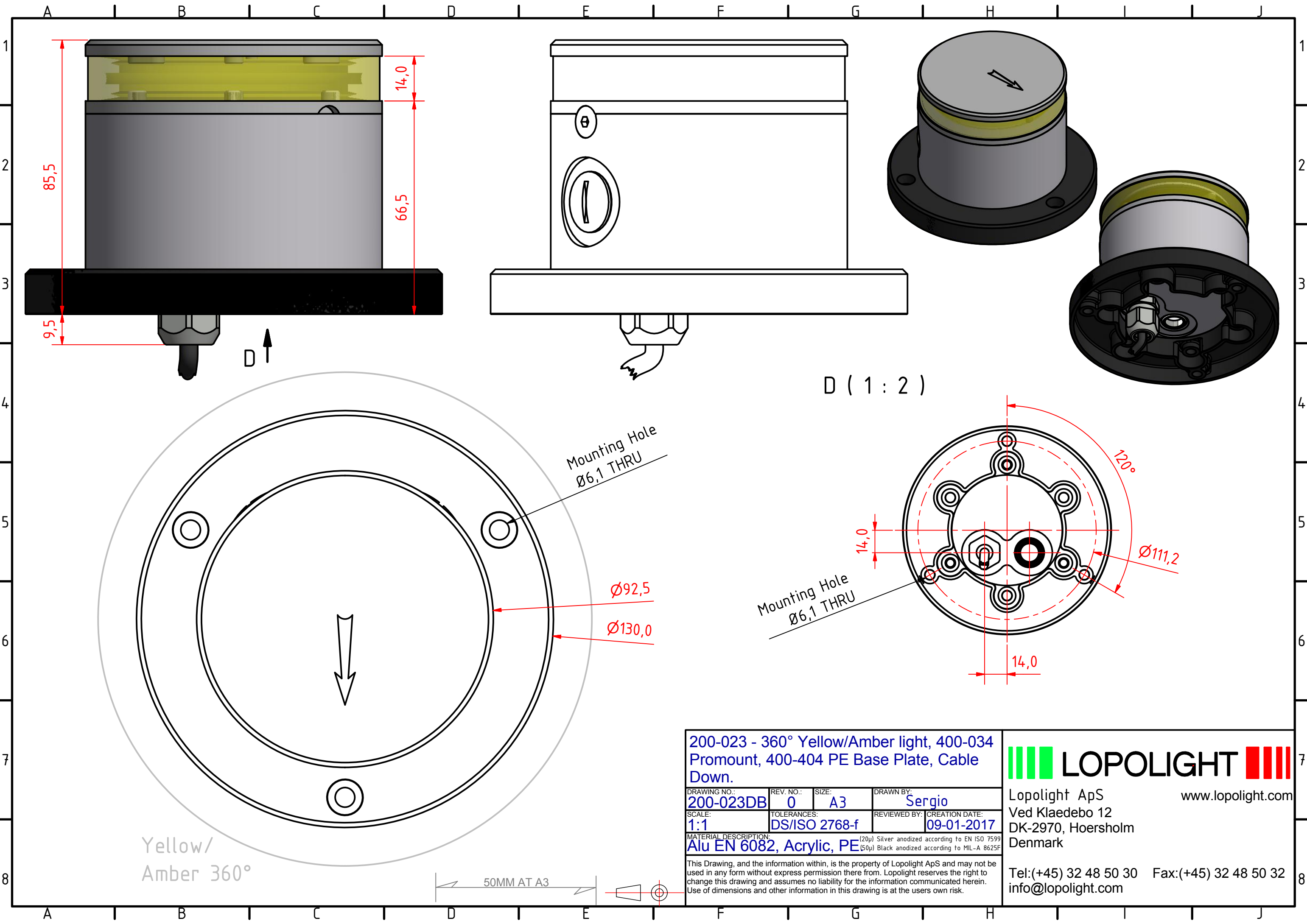
This Drawing, and the information within, is the property of Lopolight ApS and may not be used in any form without express permission there from. Lopolight reserves the right to change this drawing and assumes no liability for the information communicated herein. Use of dimensions and other information in this drawing is at the users own risk.

**LOPOLIGHT**

Lopolight ApS  
Ved Klaedebo 12  
DK-2970, Hoersholm  
Denmark

Tel:(+45) 32 48 50 30 Fax:(+45) 32 48 50 32  
info@lopolight.com

50MM AT A3



Yellow/  
Amber 360°

Mounting Hole  
Ø6,1 THRU

Ø92,5

Ø130,0

D ( 1 : 2 )

Mounting Hole  
Ø6,1 THRU

120°

Ø111,2

200-023 - 360° Yellow/Amber light, 400-034  
Promount, 400-404 PE Base Plate, Cable  
Down.

DRAWING NO.:	REV. NO.:	SIZE:	DRAWN BY:
200-023DB	0	A3	Sergio
SCALE:	TOLERANCES:	REVIEWED BY:	CREATION DATE:
1:1	DS/ISO 2768-f		09-01-2017

MATERIAL DESCRIPTION:  
Alu EN 6082, Acrylic, PE (20µ) Silver anodized according to EN ISO 7599  
(50µ) Black anodized according to MIL-A 8625F

This Drawing, and the information within, is the property of Lopolight ApS and may not be used in any form without express permission there from. Lopolight reserves the right to change this drawing and assumes no liability for the information communicated herein. Use of dimensions and other information in this drawing is at the users own risk.

**LOPOLIGHT**

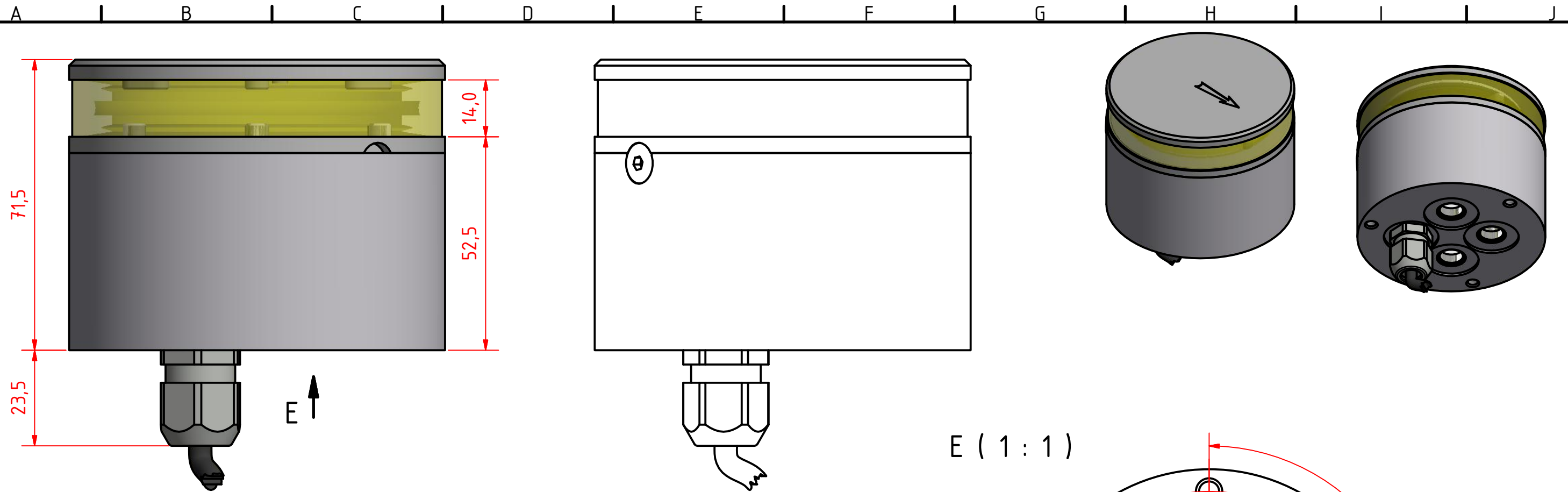
Lopolight ApS  
Ved Klaedebo 12  
DK-2970, Hoersholm  
Denmark

Tel:(+45) 32 48 50 30 Fax:(+45) 32 48 50 32  
info@lopolight.com

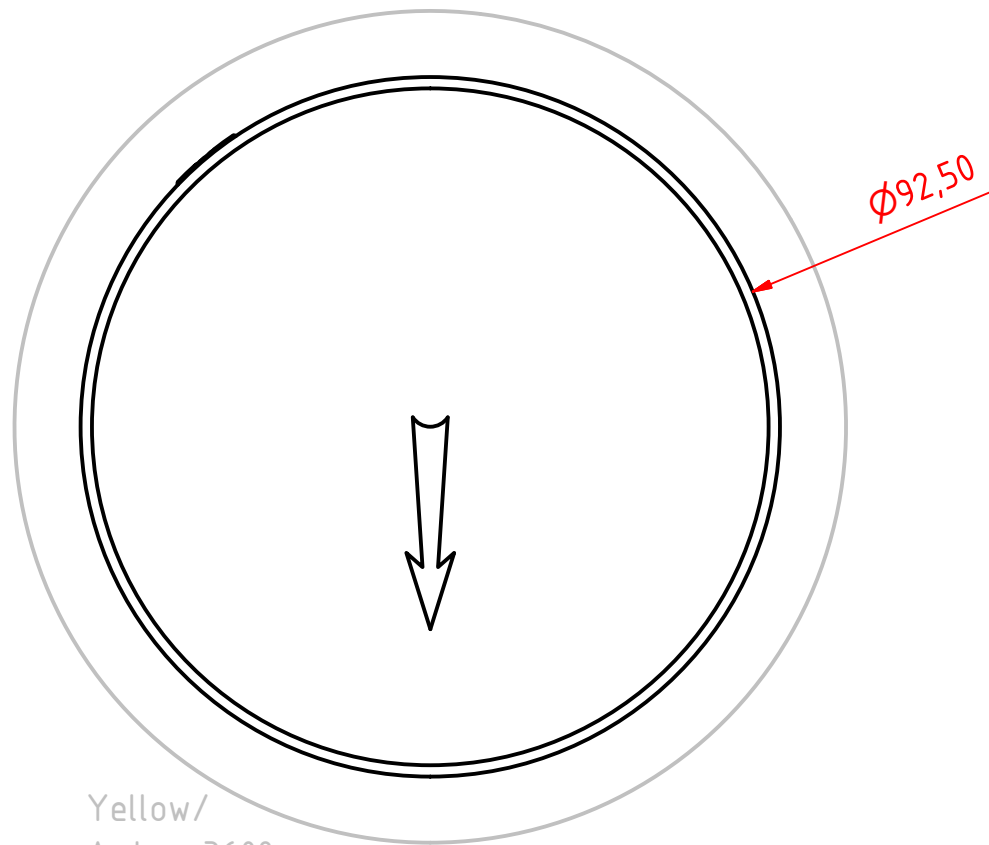
50MM AT A3





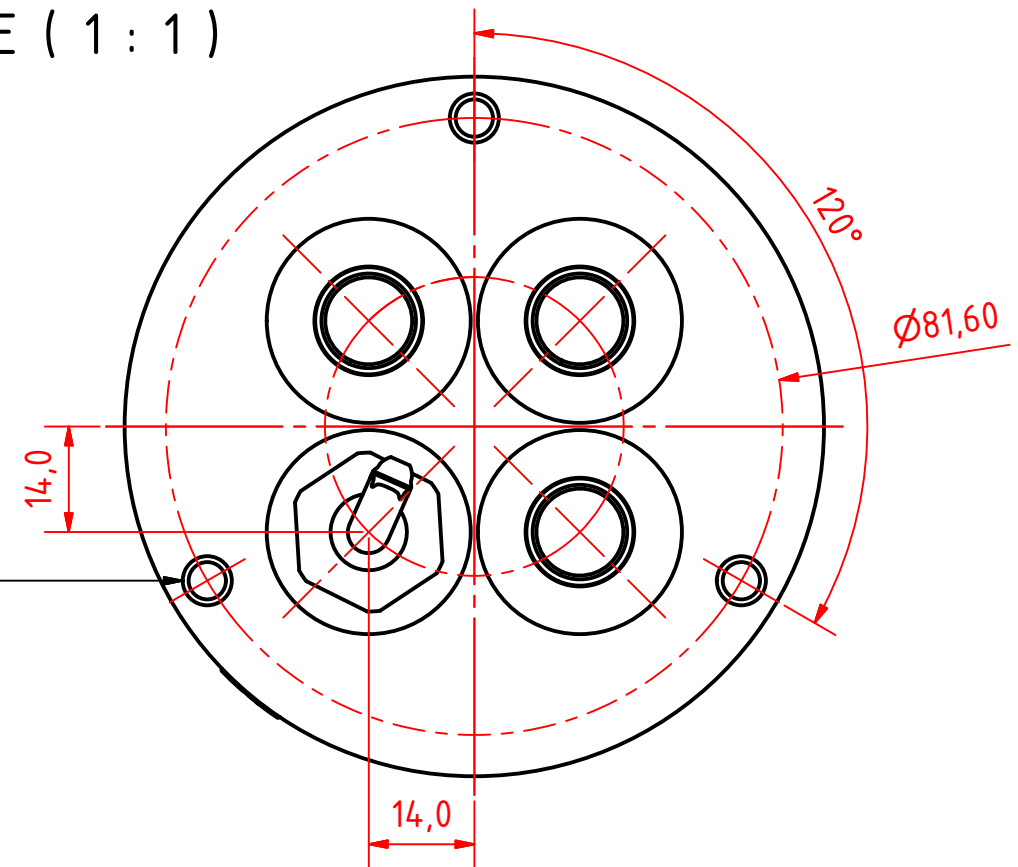


E ( 1 : 1 )



Yellow/  
Amber 360°

Mounting Hole  
M6x1 - 8,0mm DEEP



200-023 - 360° Yellow/Amber light, 400-035  
Promount, Cable Down.

DRAWING NO.: 200-023FB	REV. NO.: 0	SIZE: A3	DRAWN BY: Sergio
SCALE: 1:1	TOLERANCES: DS/ISO 2768-f	REVIEWED BY:	CREATION DATE: 09-01-2017
MATERIAL DESCRIPTION: Alu EN 6082, Acrylic.			

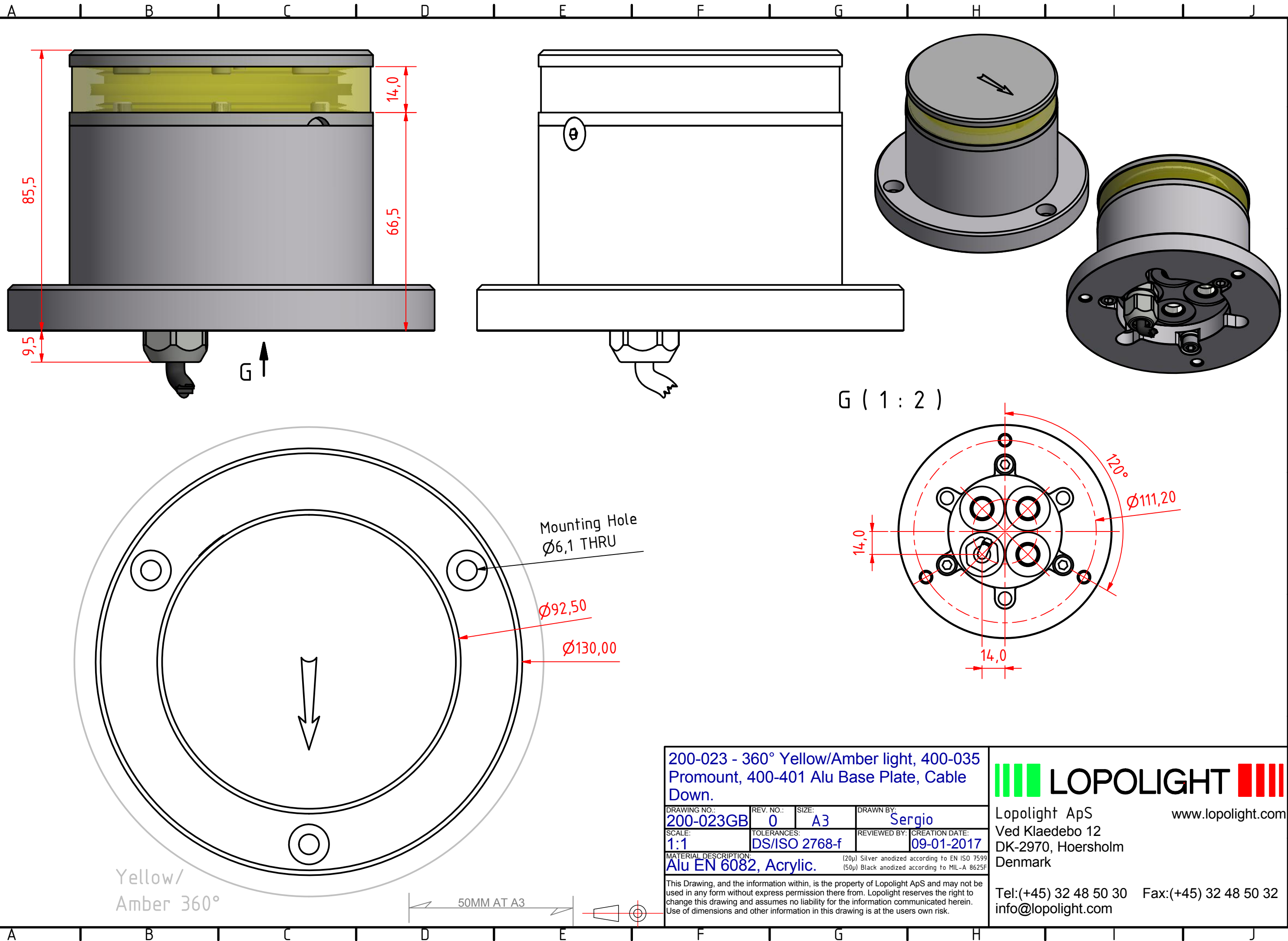
(20µ) Silver anodized according to EN ISO 7599  
(50µ) Black anodized according to MIL-A 8625F  
This Drawing, and the information within, is the property of Lopolight ApS and may not be used in any form without express permission there from. Lopolight reserves the right to change this drawing and assumes no liability for the information communicated herein. Use of dimensions and other information in this drawing is at the users own risk.

**LOPOLIGHT**

Lopolight ApS  
Ved Klaedebo 12  
DK-2970, Hoersholm  
Denmark  
www.lopolight.com

Tel: (+45) 32 48 50 30 Fax: (+45) 32 48 50 32  
info@lopolight.com

50MM AT A3



200-023 - 360° Yellow/Amber light, 400-035 Promount, 400-401 Alu Base Plate, Cable Down.			
DRAWING NO.: 200-023GB	REV. NO.: 0	SIZE: A3	DRAWN BY: Sergio
SCALE: 1:1	TOLERANCES: DS/ISO 2768-f	REVIEWED BY:	CREATION DATE: 09-01-2017
MATERIAL DESCRIPTION: (20µ) Silver anodized according to EN ISO 7599 (50µ) Black anodized according to MIL-A 8625F			
This Drawing, and the information within, is the property of Lopolight ApS and may not be used in any form without express permission there from. Lopolight reserves the right to change this drawing and assumes no liability for the information communicated herein. Use of dimensions and other information in this drawing is at the users own risk.			

**LOPOLIGHT**

Lopolight ApS

www.lopolight.com

Ved Klaedebo 12

DK-2970, Hoersholm

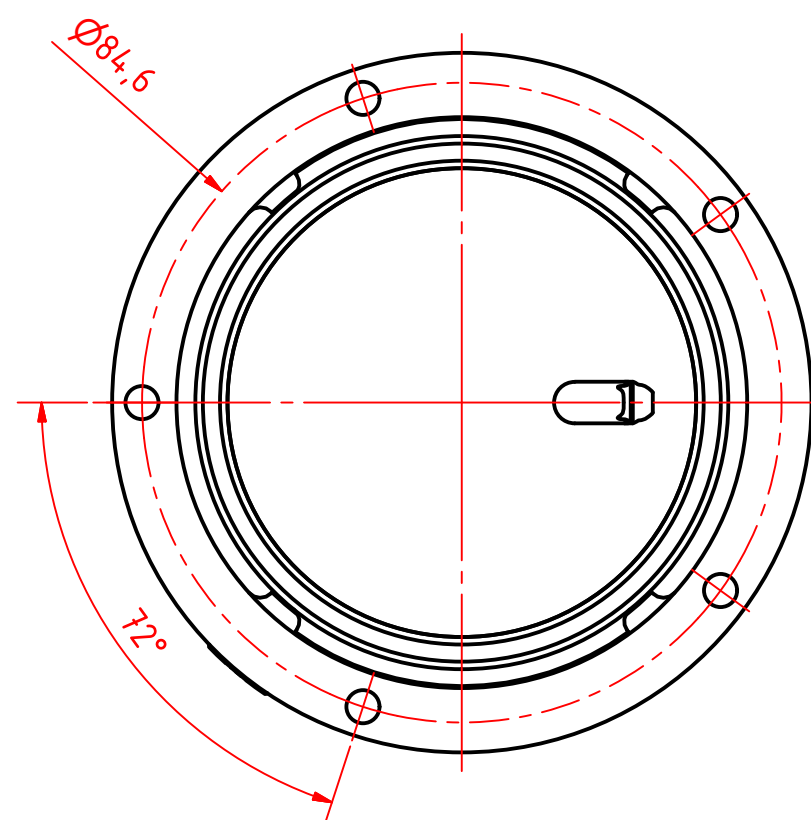
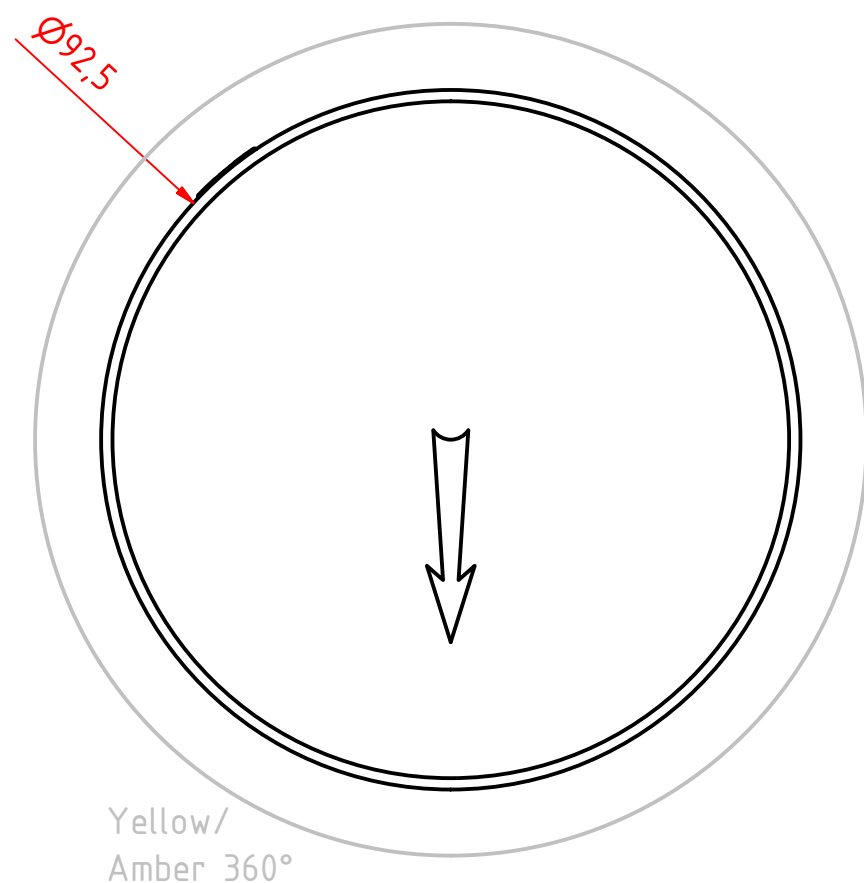
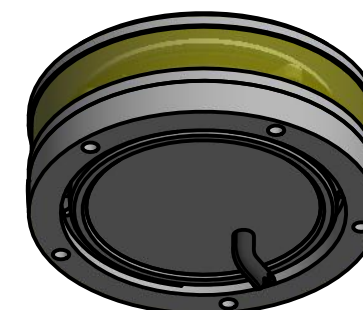
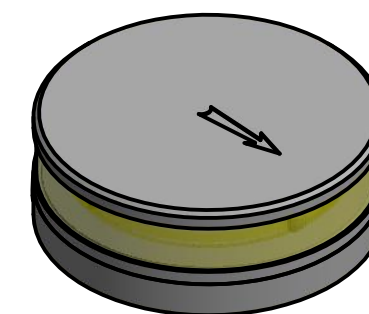
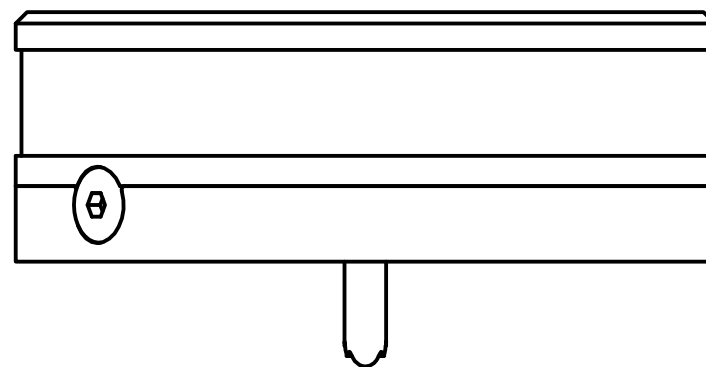
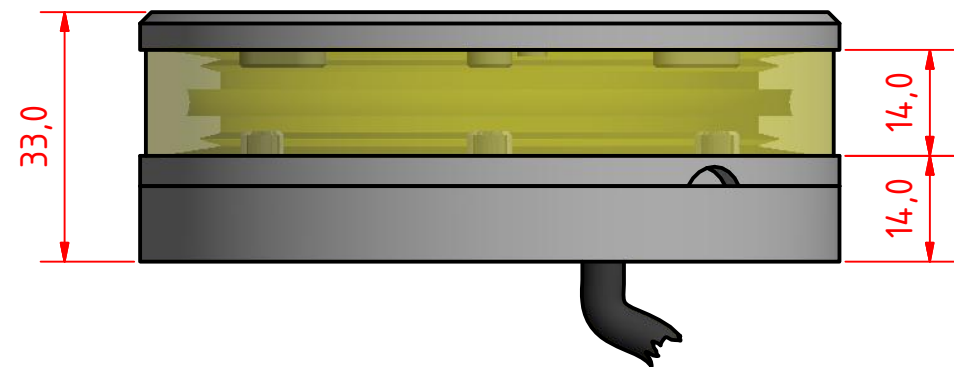
Denmark

Tel:(+45) 32 48 50 30

Fax:(+45) 32 48 50 32

info@lopolight.com





# 200-023 - 360° Yellow/Amber light on a low profile base

DRAWING NO.: <b>200-023HB</b>	REV. NO.: <b>0</b>	SIZE: <b>A3</b>	DRAWN BY: <b>Sergio</b>
SCALE: <b>1:1</b>	TOLERANCES: <b>DS/ISO 2768-f</b>	REVIEWED BY:	CREATION DATE: <b>09-01-2017</b>

MATERIAL DESCRIPTION:  
**Alu EN 6082, Acrylic, PE** (20µ) Silver anodized according to EN ISO 7599  
(50µ) Black anodized according to MIL-A 8625F

This Drawing, and the information within, is the property of Lopolight ApS and may not be used in any form without express permission there from. Lopolight reserves the right to change this drawing and assumes no liability for the information communicated herein. Use of dimensions and other information in this drawing is at the users own risk.



Lopolight ApS  
Ved Klaedebo 12  
DK-2970, Hoersholm  
Denmark

Tel: (+45) 32 48 50 30 Fax: (+45) 32 48 50 32  
info@lopolight.com

50MM AT A3

